



TRAMOSA

GRÚAS PARA LA CONSTRUCCIÓN



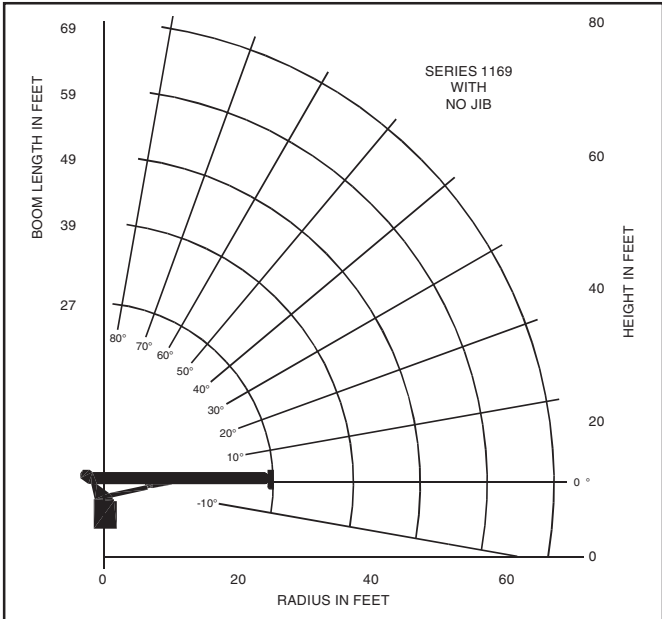
GRÚA TITÁN
NATIONAL CRANÉ 1100
25 TONS

capacities

5

Load Rating Chart: Series 1169 (21.04 m) Boom

National Crane will send you a chart on request – or you may secure needed load rating information through your nearest National Crane dealer.



- Caution:**
- Do not operate crane booms, jib extensions, any accessories or loads within 10 ft (3m) of live power lines or other conductors of electricity
 - Jib and boom capacities shown are maximum for each section
 - Do not exceed capacities at reduced radii
 - Load ratings shown on the load rating charts are maximum allowable loads with the outriggers properly extended on a firm, level surface and the crane leveled and mounted on a factory-recommended truck
 - Always level the crane with the level indicator located on the crane
 - The operator must reduce loads to allow for factors such as wind, ground conditions, operating speeds and their effects on freely suspended loads
 - Overloading this crane may cause structural collapse or instability
 - Weights of any accessories attached to the boom or loadline must be deducted from the load chart capacities
 - Do not exceed jib capacities at any reduced boom lengths
 - Do not deadhead lineblock against boom tip when extending boom or winching up
 - Keep at least three wraps of loadline on drum at all times
 - Use only specified cable with this machine
 - Maximum capacity with Burst-of-Speed is 3,000 lb (1 361 kg) on single part line

**SERIES 1169
NO JIB**

LOADLINE EQUIPMENT DEDUCT

Downhaul weight.....	150 lb (68 kg)
One sheave block	305 lb (138 kg)
Two sheave block.....	355 lb (161 kg)
Three sheave block.....	575 lb (261 kg)

Load Rating Chart: Series 1169 (21.04 m) Boom

LOAD RADIUS (ft)	LOADED BOOM ANGLE	27 ft BOOM (lb)	LOADED BOOM ANGLE	39 ft BOOM (lb)	LOADED BOOM ANGLE	49 ft BOOM (lb)	LOADED BOOM ANGLE	59 ft BOOM (lb)	LOADED BOOM ANGLE	69 ft BOOM (lb)
5	77	*53,900								
8	70	42,000								
10	65.5	35,400								
12	60.5	30,700	71	28,300	75.5	26,500	78.5	25,000		
14	55	26,900	67.5	24,900	73	23,400	76	22,000	79.5	19,500
16	49.5	23,900	64	22,400	70	20,900	74	19,700	78	18,500
20	36.5	18,800	57.5	18,300	65	17,400	70	16,200	74.5	15,800
25			48	14,800	58	14,200	65	13,300	70	12,700
30			36	12,000	51	11,900	59	11,200	65	10,800
35			19	8,800	42.5	10,000	53	9,600	60	9,300
40					33.5	8,000	46	8,100	56	8,200
45					19	6,500	39.5	6,700	50	7,000
50							31	5,600	44	5,900
55							18	4,700	37	5,000
60									29	4,350
65									17	3,500
	0	8,500	0	5,100	0	3,500	0	2,400	0	1,700

NOTE: 56,000 lb (25.4 t) LOAD REQUIRES OPTIONAL 9/16 in 6x25 IWRC CABLE. Shaded areas are structurally limited capacities.

THIS CHART IS ONLY A GUIDE AND SHOULD NOT BE USED TO OPERATE THE CRANE. The individual crane's load chart, operating instructions and other instructional plates must be read and understood prior to operating the crane.

1100